

**SERVICE MANUAL**

**DATSUN 1000**

**MODEL B10 SERIES**

**NISSAN**

**NISSAN MOTOR CO., LTD. TOKYO, JAPAN**

**SERVICE  
MANUAL**

*Datsun*

**1000**

**MODEL B10 SERIES**

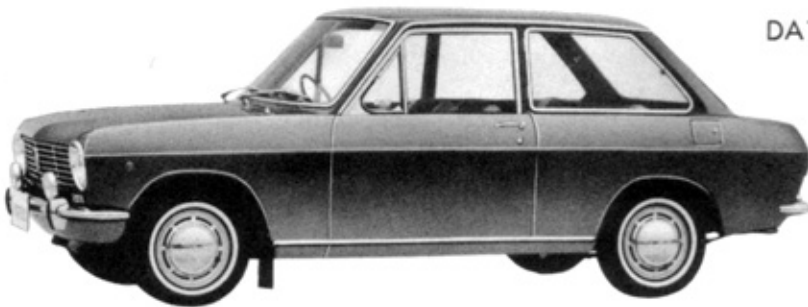
**NISSAN MOTOR CO., LTD.**  
OTEMACHI BLDG., OTEMACHI, CHIYODA-KU,  
TOKYO, JAPAN

.....  
CABLE ADDRESS : "NISMO" TOKYO  
PHONES : (216) 2311

# INTRODUCTION

This manual has been compiled for the purpose of assisting DATSUN 1000 distributors and dealers for effective service and maintenance of the Model B10 Series. Each assembly of the major components is described in detail. In addition, comprehensive instructions are given for complete dismantling, assembling and inspection of these assemblies.

It is emphasised that only genuine DATSUN 1000 Spare Parts should be used as replacements.



DATSUN 1000 MODEL B10



DATSUN 1000 MODEL VB10

# CONTENTS

## CONTENTS

	Page
<b>GENERAL SPECIFICATIONS</b> .....	I
<b>SERVICE DATA</b> .....	IX
<b>ENGINE</b> .....	1
Cooling System .....	3
Lubrication .....	9
<b>SERVICE OPERATIONS WITH ENGINE IN POSITION</b> .....	17
Rocker Mechanism .....	18
<b>REMOVING &amp; REFITTING</b> .....	27
Operation with the Engine Removed .....	28
<b>IGNITION TIMING</b> .....	47
Distributor .....	47
Adjusting the Ignition Timing .....	48
Troubles & Remedies .....	50
<b>FUEL SYSTEM</b> .....	53
Carburetor .....	53
The Gasoline Tank .....	57
Adjustment and Inspection of Engine .....	62
<b>CLUTCH</b> .....	67
<b>TRANSMISSION</b> .....	73
<b>CHASSIS</b> .....	95
<b>STEERING</b> .....	95
Steering Gear Housing .....	99
<b>FRONT AXLE</b> .....	103
Dismantling the Front Hub .....	105
Front Spring .....	106
Upper Link .....	108
Lower Link .....	108
<b>REAR AXLE</b> .....	109
Inspection & Repairing of Disassembled Parts .....	115
Assembling Adjustment .....	116
<b>BRAKE SYSTEM</b> .....	125
<b>PROPELLER SHAFT</b> .....	131
<b>REAR SUSPENSION</b> .....	133

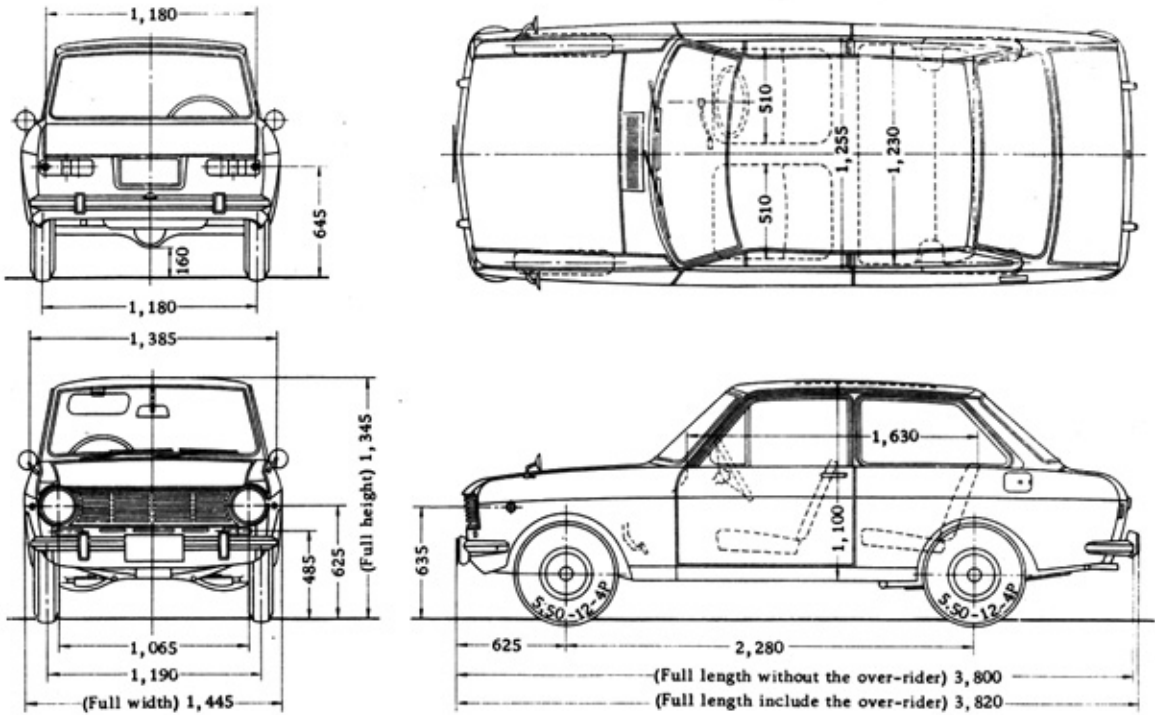
# DATSUN 1000

---

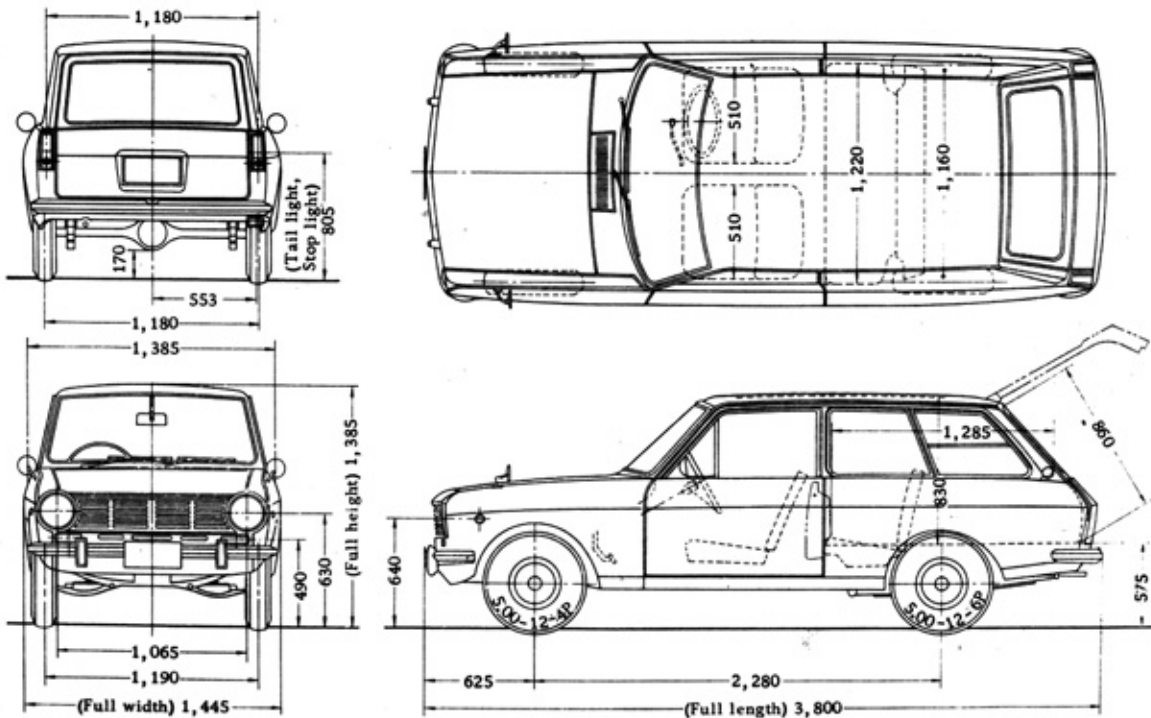
<b>ELECTRICAL SYSTEM</b> .....	137
Alternator .....	140
Generator .....	140
14 Items on Handling .....	149
Trouble Shooting List .....	150
Starter Motor .....	151

<b>BODY</b> .....	159
-------------------	-----

GENERAL VIEWS OF B10



GENERAL VIEWS OF VB10



These specifications are subject to change without notice.

